

# 8B Series

## Sealed Sub-Miniature Pushbutton Switches(SMT)



### SPECIFICATIONS

**CONTACT RATING:** Dependent upon contact material.

**MECHANICAL LIFE:** 50,000 make-and-break cycles.

**CONTACT RESISTANCE:** 20mΩ max. initial @ 2-4VDC  
100mA for both silver and gold plated contacts.

**INSULATION RESISTANCE:** 1,000MΩ min.

**DIELECTRIC STRENGTH:** 1,000 V RMS@sea level.

**OPERATING TEMPERATURE:** -30°C to 85°C

### MATERIALS

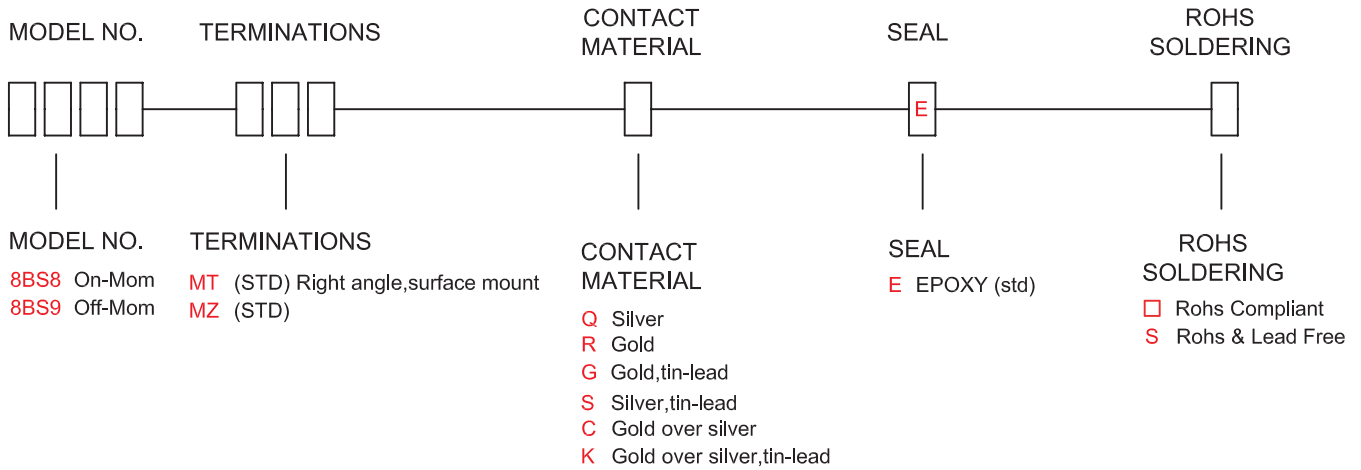
**CASE & BUSHING** - Glass filled nylon 4/6, flame retardant, heat stabilized ( UL 94V-0 )

**PLUNGER** - Thermoplastic Polyester (UL 94V-0), with internal O-ring seal.

**SWITCH SUPPORT** - Brass, tin plated.

**CONTACT/TERMINALS** - Silver or gold plated copper alloy.

## HOW TO ORDER



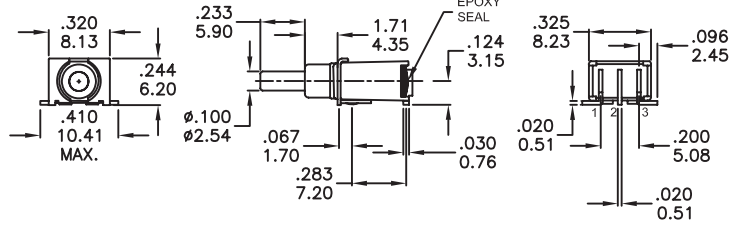
### SWITCH FUNCTION

NO. POLES	MODEL NO.	SWITCH FUNCTION		CONNECTED TERMINALS		SCHEMATIC
		POS.1	POS.2	POS.1	POS.2	
		ON	MOM	2-1	2-3	
SP	8BS8	ON	MOM	2-1	2-3	
8BS9	OFF	MOM	OPEN	1-3		

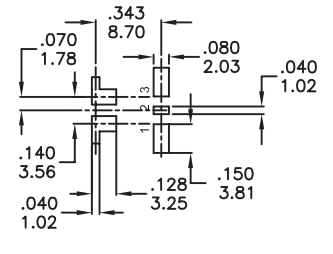
MOM=MOMENTARY

### POLE OPTIONS

MT



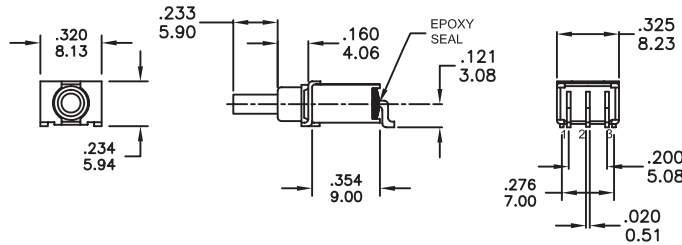
P.C. MOUNTING



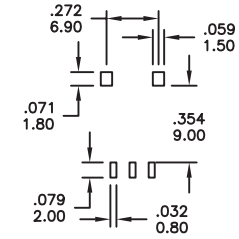
SPDT

Part No. shown : 8BS8MTRE

MZ



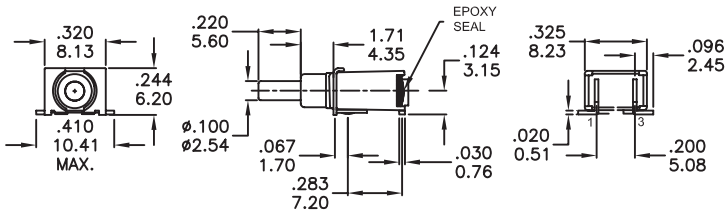
P.C. MOUNTING



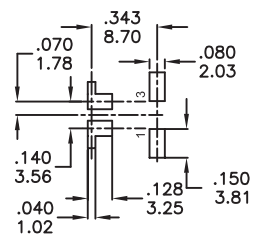
SPDT

Part No. shown : 8BS8MZRE

MT



P.C. MOUNTING



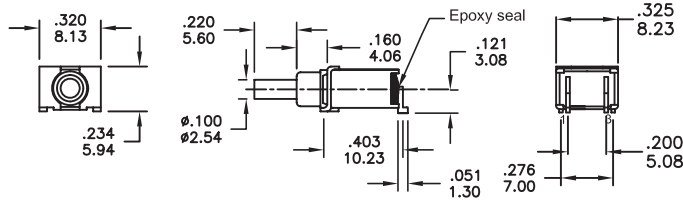
SPST

Part No. shown : 8BS9MTRE

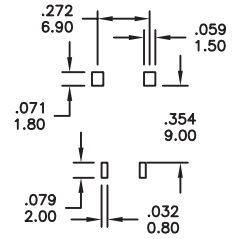
# 8B Series

## Sealed Sub-Miniature Pushbutton Switches(SMT)

MZ



P.C. MOUNTING

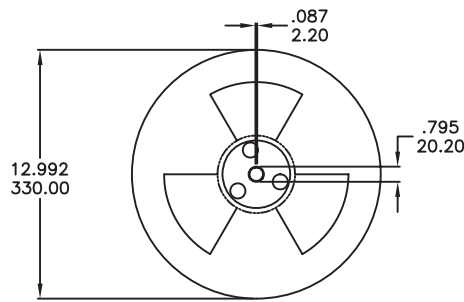


SPST

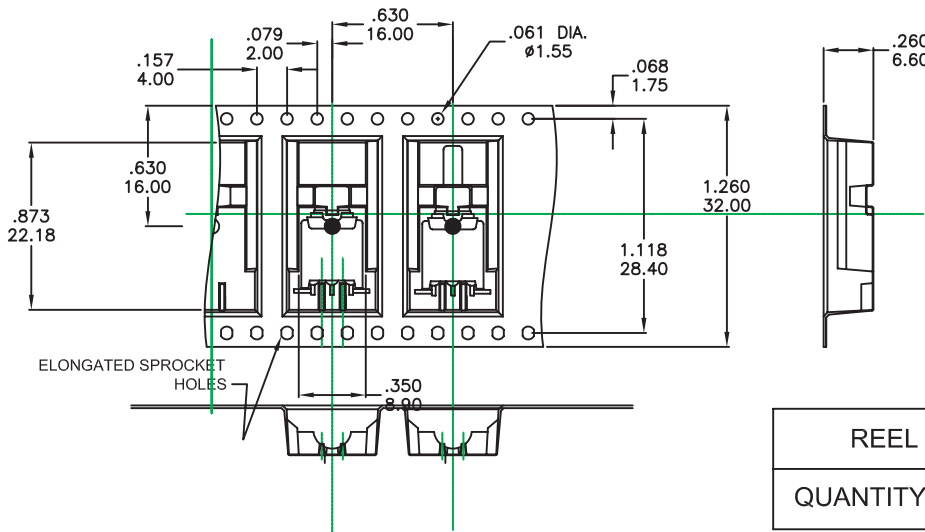
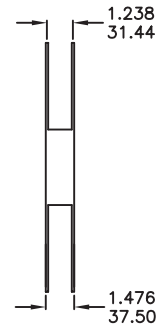
Part No. shown : 8BS9MZRE

### PACKAGING

Switches available on embossed antistatic tape and reels.  
Tape and cover strip are conductive for use near statically sensitive components.



SCALE: 10 : 1



SCALE: 1 : 1

REEL INFORMATION	
QUANTITY PER REEL	500



### SOLDERING PROCESSES

**MANUAL SOLDERING** : Use soldering iron of 30 watts, controlled at 350°C approximately 5 seconds while applying solder.

**WAVE SOLDERING** : Recommended Soldering Temperature: 260±5°C  
Duration of Solder Immersion: 5 ±1 seconds  
(PCB is 1.6mm in thickness)

**SOLDERING** : Vapor phase & IR- reflow soldering can be applied.

Temperature Profile

Zone	Room temperature	Time ( Sec )
Pre-heat ( A )	150°C	Min 120s
Soak ( B )	180°C~200°C	Min 150s
Peak ( C )	200°C~235°C	Min 30s
Peak ( D )	235°C~260°C	Min 40s
Peak ( E )	260°C	Max 10s

