

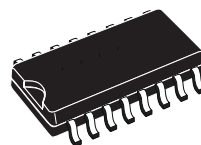
DIMENSIONS						
REF.	mm			inch		
	MIN.	TYP.	MAX.	MIN.	TYP.	MAX.
A			1.75			0.068
a1	0.1		0.2	0.004		0.008
a2			1.65			0.064
b	0.35		0.46	0.013		0.018
b1	0.19		0.25	0.007		0.010
C		0.5			0.019	
c1	45° (typ.)					
D	9.8		10	0.385		0.393
E	5.8		6.2	0.228		0.244
e		1.27			0.050	
e3		8.89			0.350	
F	3.8		4.0	0.149		0.157
G	4.6		5.3	0.181		0.208
L	0.5		1.27	0.019		0.050
M			0.62			0.024
S	8° (max.)					



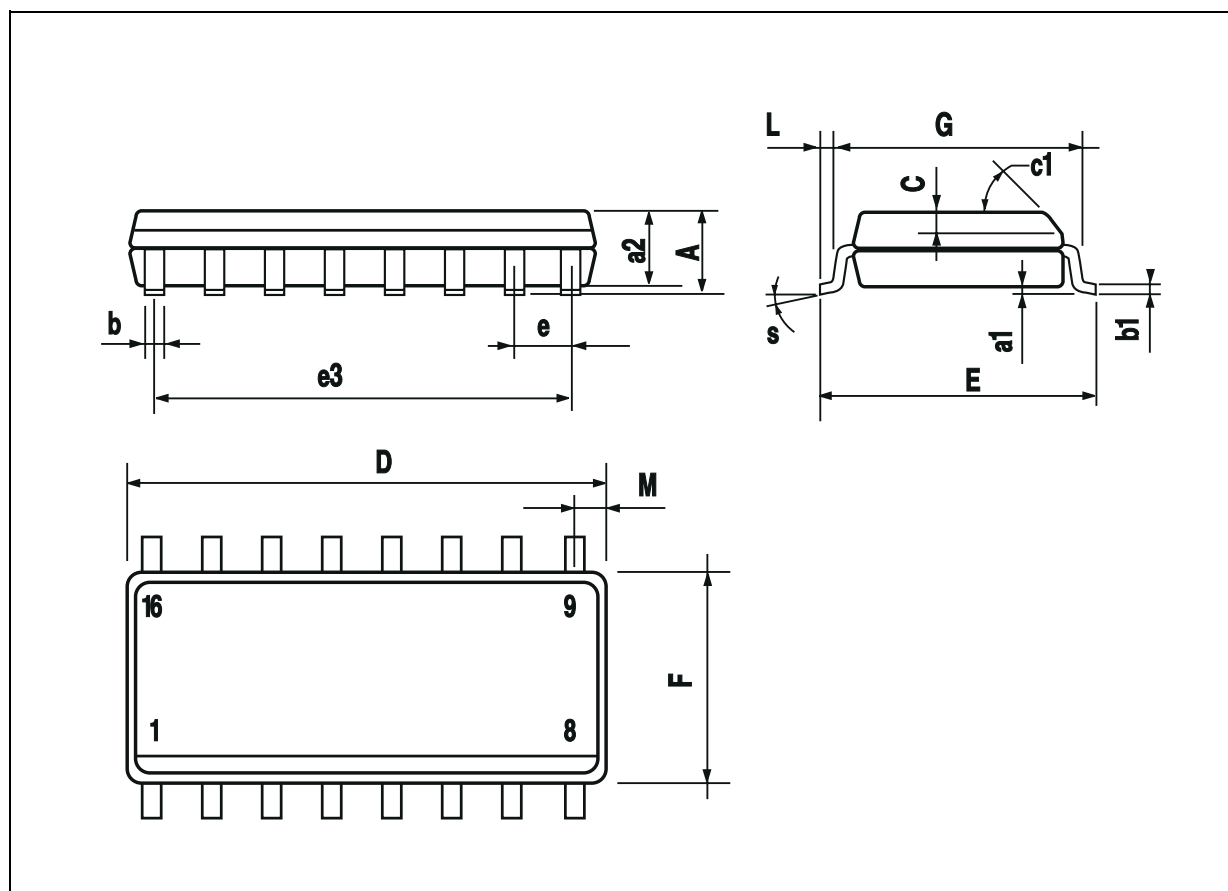
**PACKAGE AND  
PACKING INFORMATION**

**16-LEAD SMALL OUTLINE  
PACKAGE**

Weight: not available

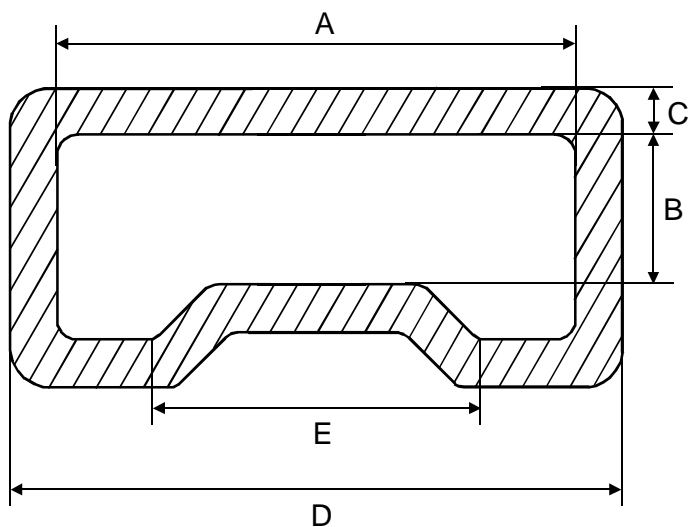


**SO-16**



**SO-16 PACKAGE AND PACKING INFORMATION**

**TUBE SHIPMENT INFORMATION**



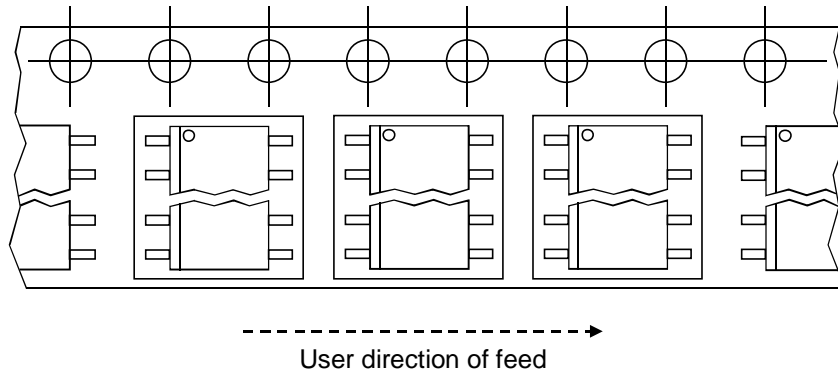
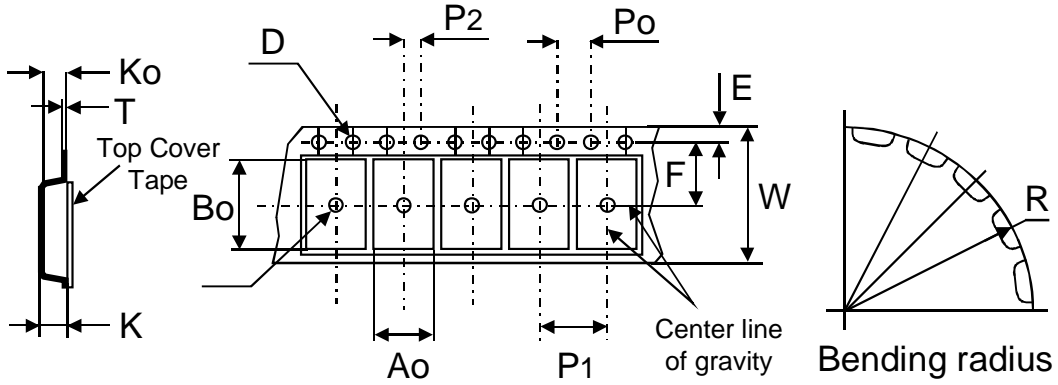
**TUBE MECHANICAL DATA**

	mm.	inch
A	6.60 ±0.10	0.260 ±0.004
B	1.90 ±0.10	0.075 ±0.004
C	0.60 ±0.10	0.024 ±0.004
D	3.80 ±0.10	0.150 ±0.004
E	4.30 ±0.10	0.169 ±0.004

BASE QUANTITY	50 pcs.
BULK QUANTITY	1000 pcs.

TAPE & REEL SHIPMENT INFORMATION

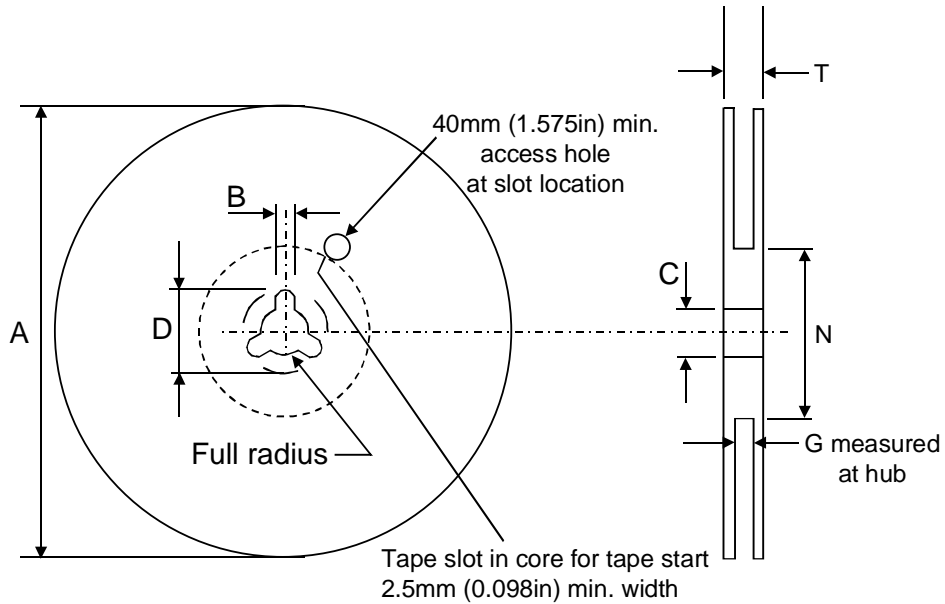
TAPE SPECIFICATIONS



TAPE MECHANICAL DATA		
	mm.	inch
D	1.50 +0.1/0	0.059 +0.004/0
E	1.75 ±0.1	0.069 ±0.004
P <sub>o</sub>	4.00 ±0.1	0.157 ±0.004
T max.	0.40	0.016
D1 min.	1.50	0.059
F	7.5 ±0.05	0.295 ±0.002
K max.	6.50	0.256
P <sub>2</sub>	2.00 ±0.05	0.079 ±0.002
R	40	1.575
W	16.00 ±0.30	0.630 ±0.012
P <sub>1</sub>	12.00	0.472
A <sub>o</sub> , B <sub>o</sub> , K <sub>o</sub>	0.05 min to 0.90 max.	0.002 min to 0.035 max.

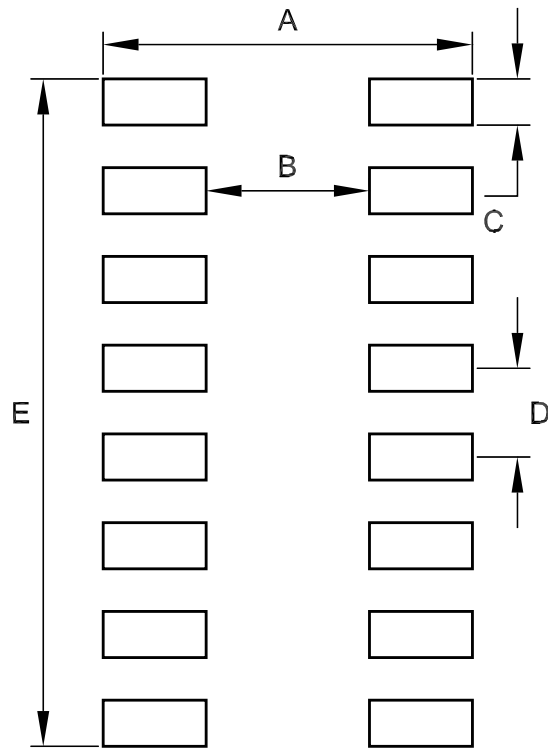
BASE QUANTITY	2500 pcs.
BULK QUANTITY	2500 pcs.

TAPE & REEL SHIPMENT INFORMATION  
REEL SPECIFICATIONS



REEL MECHANICAL DATA		
	mm.	inch
Tape size	16.0 ±0.30	0.630 ±0.012
A max.	330.0	12.992
B min.	1.5	0.059
C	13.0 ±0.20	0.512 ±0.008
D min.	20.2	0.795
N min.	60	2.362
G	16.4 +2/-0	0.646 +0.079/-0
T max.	22.4	0.882

FOOTPRINT RECOMMENDED DATA



FOOTPRINT DATA		
	mm.	inch
A	6.8	0.268
B	4.4	0.173
C	0.55	0.022
D	1.27	0.050
E	9.44	0.372