

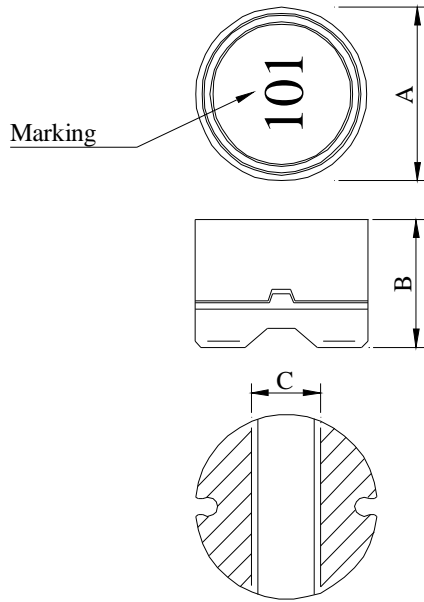
# SPECIFICATION FOR APPROVAL

REF :

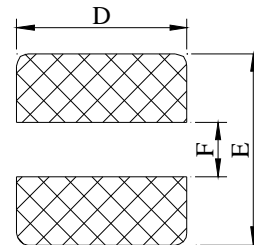
PAGE: 1

PROD. NAME	SHIELDED SMD POWER INDUCTOR	ABC'S DWG NO.	SS0704□□□□L□-□□□
		ABC'S ITEM NO.	

## I . CONFIGURATION & DIMENSIONS :

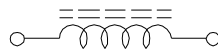


- A : 7.5±0.3 m/m
- B : 4.0±0.3 m/m
- C : 2.6 typ. m/m
- D : 8.0 ref. m/m
- E : 7.8 ref. m/m
- F : 2.4 ref. m/m



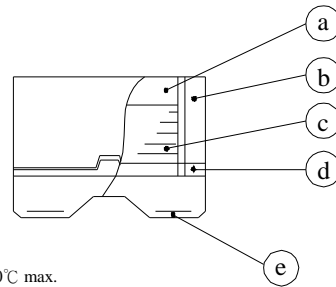
( PCB Pattern )

## II . SCHEMATIC DIAGRAM :



## III . MATERIALS :

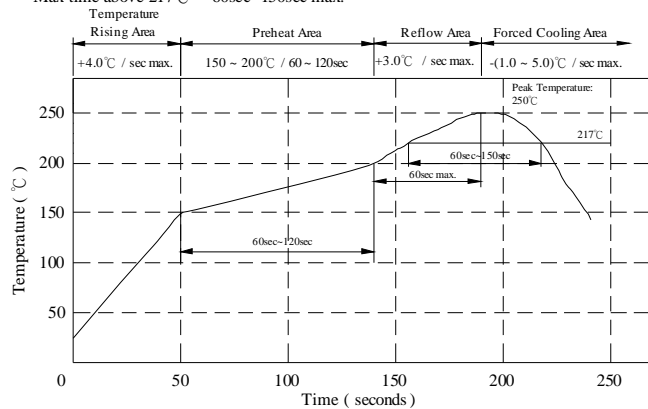
- a . Core : Ferrite DR core
- b . Core : Ferrite RI core
- c . Wire : Enamelled copper wire (class F)
- d . Plastic : GAP Specer
- e . Terminal : Ag/Ni/Sn
- f . Remark : Products comply with RoHS' requirements



Peak Temp : 250°C max.  
 Max. Peak Temp - 5°C : 30sec max.  
 Max time above 217°C : 60sec~150sec max.

## IV . GENERAL SPECIFICATION :

- a . Temp. rise : 30°C max.
- b . Rated current : Base on temp. rise  
& ΔL / LOA=10% typ.
- c . Storage temp. : -40°C ----+125°C
- d . Operating temp. : -40°C ----+105°C
- e . Resistance to solder heat : 250°C.10 secs.



AR-001A

# SPECIFICATION FOR APPROVAL

REF :

PAGE: 2

PROD. NAME	SHIELDED SMD POWER INDUCTOR	ABC'S DWG NO.	SS0704□□□□L□-□□□
		ABC'S ITEM NO.	

## V . ELECTRICAL CHARACTERISTICS :

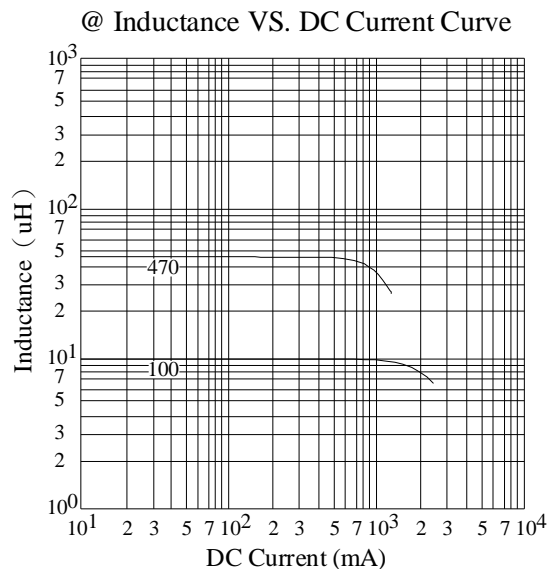
DWG No.	Inductance (μH)	Q ref.	Test Freq. ( Hz )		SRF ( MHz ) typ.	RDC ( mΩ ) max.	I <sub>rms</sub> ( A ) max	I <sub>sat</sub> ( A ) typ.
			L (0.1V)	Q				
SS0704100YL□-□□□	10.0±15%	30	100K	2.52M	25.0	65	1.70	1.90
SS0704120YL□-□□□	12.0±15%	30	100K	2.52M	22.0	70	1.60	1.80
SS0704150YL□-□□□	15.0±15%	30	100K	2.52M	20.0	95	1.40	1.60
SS0704180YL□-□□□	18.0±15%	30	100K	2.52M	18.0	105	1.30	1.40
SS0704220YL□-□□□	22.0±15%	28	100K	2.52M	16.0	136	1.20	1.30
SS0704270YL□-□□□	27.0±15%	25	100K	2.52M	14.0	165	1.10	1.25
SS0704330KL□-□□□	33.0±10%	25	100K	2.52M	13.0	180	1.05	1.15
SS0704390KL□-□□□	39.0±10%	25	100K	2.52M	12.0	200	0.92	1.00
SS0704470KL□-□□□	47.0±10%	25	100K	2.52M	11.0	260	0.80	0.90
SS0704560KL□-□□□	56.0±10%	25	100K	2.52M	10.0	280	0.70	0.72
SS0704680KL□-□□□	68.0±10%	25	100K	2.52M	9.0	350	0.65	0.68
SS0704820KL□-□□□	82.0±10%	20	100K	2.52M	8.0	450	0.62	0.65
SS0704101KL□-□□□	100.0±10%	40	100K	796K	7.5	560	0.55	0.62
SS0704121KL□-□□□	120.0±10%	35	100K	796K	7.0	670	0.50	0.58
SS0704151KL□-□□□	150.0±10%	40	100K	796K	6.5	800	0.46	0.54
SS0704181KL□-□□□	180.0±10%	50	100K	796K	6.0	1150	0.40	0.45
SS0704221KL□-□□□	220.0±10%	45	100K	796K	5.0	1250	0.36	0.40
SS0704271KL□-□□□	270.0±10%	40	100K	796K	4.5	1400	0.32	0.35

1). □ : Packaging informatinon... **A** : Bulk **B** : Taping Reel

2). "- □□□ " : Reference code

3). I<sub>rms</sub> Base on temp. rise 30°C max.

4). I<sub>sat</sub> Base on temp rise ΔL/L0A=10% typ.



AR-001A

# SPECIFICATION FOR APPROVAL

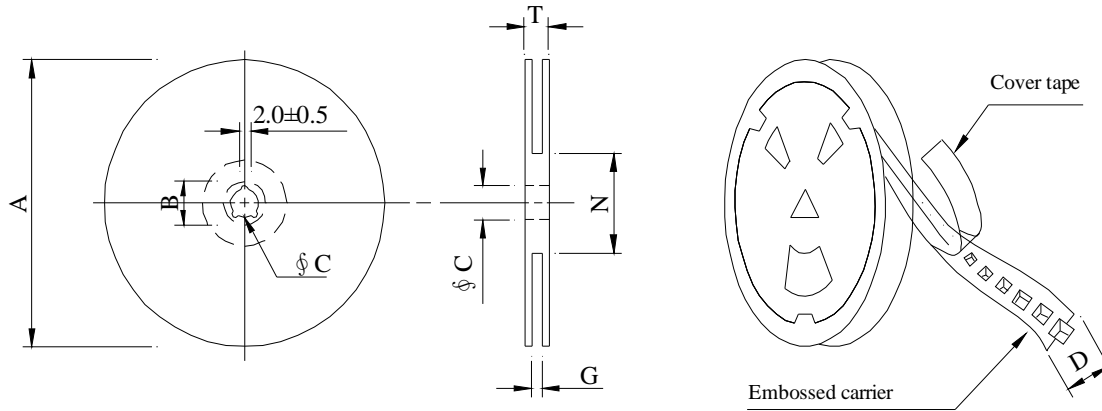
REF :

PAGE: 3

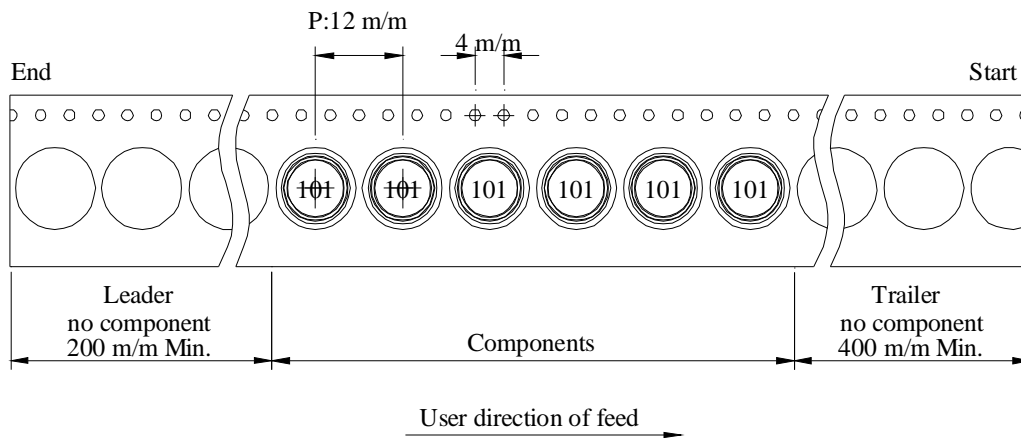
PROD. NAME	SHIELDED SMD POWER INDUCTOR	ABC'S DWG NO.	SS0704□□□□L□-□□□
		ABC'S ITEM NO.	

## VI . PACKAGING INFORMATION :

### ( 1 ) Configuration



※Carrier tape width : D



### ( 2 ) Dimensions

Unit:m/m

Style	A	B	C	D	G	N	T
13 - 16	330	21±0.8	13±0.5	16	18 <sup>+0</sup>	50 <sup>-0</sup>	22.4

### ( 3 ) Q'TY & G.W. Per package

Series	Inner : Reel			Outer : Carton		
	Q'TY (pcs)	G.W. (gw)	Style	Q'TY (pcs)	G.W. (Kg)	Size (cm)
SS0704	1,000	640	13 - 16	6,000	6.20	38 x 37 x 22

AR-001A



# SPECIFICATION FOR APPROVAL

REF :

PAGE: 5

PROD. NAME	SHIELDED SMD POWER INDUCTOR	ABC'S DWG NO.	SS0704□□□□L□-□□□
		ABC'S ITEM NO.	

**VIII . RELIABILITY TEST :**

Test item	Specification	Test condition						
Solderability	More than 95% of the terminal electrode shall be covered With fresh solder.	Preheat : 155°C / 4 hours. Solder : Sn96.5 / Ag3 / Cu0.5 or equivalent Solder temp. : 235±5°C Flux : Rosin Dip time : 5±0.5 seconds						
Thermal shock test ( Temp. cycle )	Electrical oharacteristics shall not change more than ±20%	<table style="width: 100%; border: none;"> <tr> <td style="text-align: center;">Room temp. 15 minutes</td> <td style="text-align: center;">→</td> <td style="text-align: center;">-40 °C 30 minutes</td> </tr> <tr> <td style="text-align: center;">Room temp. 15 minutes</td> <td style="text-align: center;">→</td> <td style="text-align: center;">+105 °C 30 minutes</td> </tr> </table> <p>Total : 50 cycles</p>	Room temp. 15 minutes	→	-40 °C 30 minutes	Room temp. 15 minutes	→	+105 °C 30 minutes
Room temp. 15 minutes		→	-40 °C 30 minutes					
Room temp. 15 minutes		→	+105 °C 30 minutes					
Humidity Test		Temperature : 40±2°C Humidity : 90±5% Time : 1000 hours						
High temp. Resistance test	Temperature : 105±5°C Applied current : Per spec. Time : 96 hours							

AR-001A



