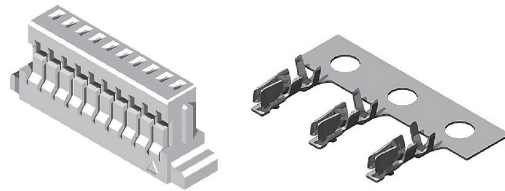
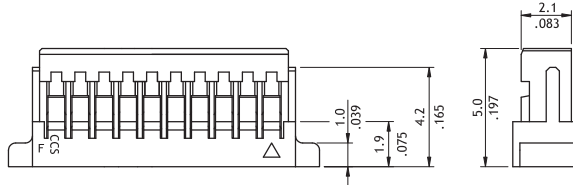
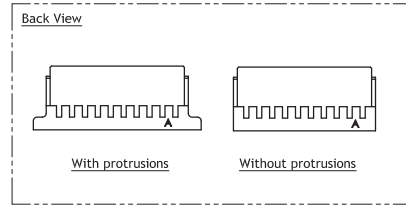
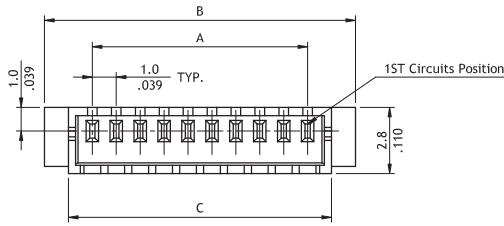


**CI11 Series 1.00mm(.039") Single Row Wire to Board Housing & Terminal**

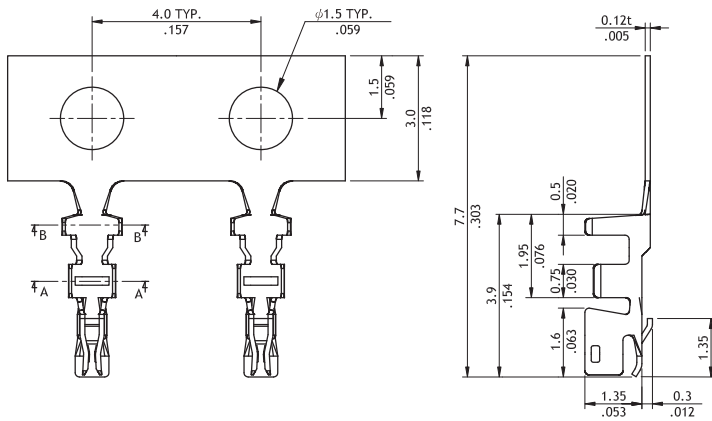
- ⊙ Insulator: Polyester UL 94V-0, Color Nature
- ⊙ Terminal: Tin plated, Phosphor Bronze
- ⊙ Mate with CI11 headers
- ⊙ Compact design
- ⊙ Protrusions design for easy pull out



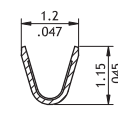
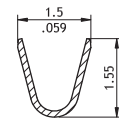
RoHS Compliant  



A = 1.0 x No. of Spaces  
 B = A + 4.0  
 C = A + 2.0



Wire Range	Insulation Diameter	Reel Qty
AWG #28-#32	0.4-0.8(mm) (.016-.031)	16,000 PCS



**Ordering Code**

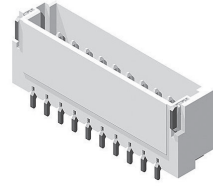
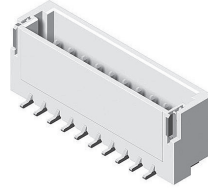
- ① C ② I ③ 11 ④ 15 ⑤ S ⑥ 000 ⑦ 0 - ⑧ NH
- ① Series No.
  - ② No. of Circuits: 02 to 15, 18, 20, 26
  - ③ S = Housing
  - ④ 000 = With Protrusions N00 = Without Protrusion
  - ⑤ Other Options: 0 = Standard \*Special options consult manufacturer
  - ⑥ Process: -NH = For Halogen-Free

- ① CI11 ② T01 ③ 1 ④ P ⑤ P0
- ① Series No.
  - ② Type: T01 = AWG #28 ~ #32
  - ③ Plating Code: 1 = Tin over Nickel
  - ④ Material: P = Phosphor Bronze
  - ⑤ Other Options: P0 = Standard

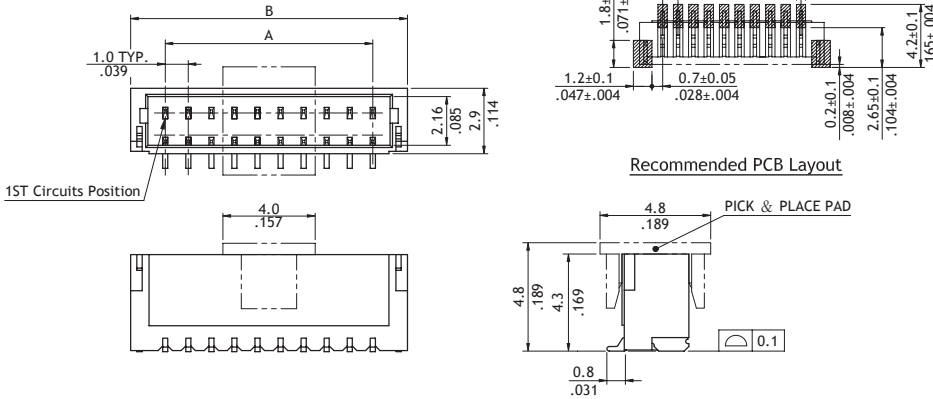
**CI11 Series 1.00mm(.039") Single Row Wire to Board SMT Headers**

- ⊙ Polarization and Low-profile
- ⊙ Locking slots provide secure mating
- ⊙ Fixed tabs provide PCB hold-down
- ⊙ Mate with CI11 housing
- ⊙ With Tin plated SMT type contact

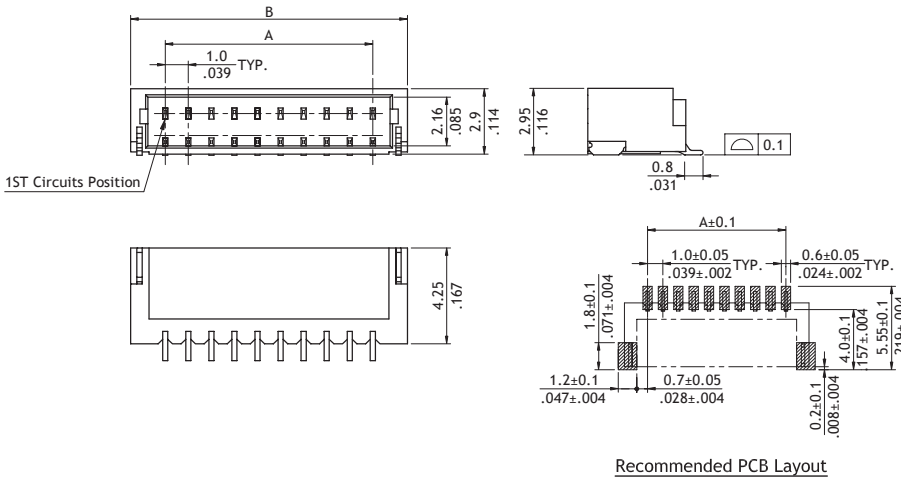
RoHS Compliant



**Top Entry**



**Side Entry**



Circuits	Dimension	
	A	B
2	1.0(.039)	4.0(.157)
3	2.0(.079)	5.0(.197)
4	3.0(.118)	6.0(.236)
5	4.0(.157)	7.0(.276)
6	5.0(.197)	8.0(.315)
7	6.0(.236)	9.0(.354)
8	7.0(.276)	10.0(.394)
9	8.0(.315)	11.0(.433)
10	9.0(.354)	12.0(.472)
11	10.0(.394)	13.0(.512)
12	11.0(.433)	14.0(.551)
13	12.0(.472)	15.0(.591)
14	13.0(.512)	16.0(.630)
15	14.0(.551)	17.0(.669)
18	17.0(.669)	20.0(.787)
20	19.0(.748)	22.0(.866)
26	25.0(.984)	28.0(1.102)

Ordering Code	
①	②
③	④
⑤	⑥
⑦	
<b>C I 1 1</b>	<b>1 5 M 1 V R 0 - N H</b>
① Series No.	⑤ Type: V = Top Entry H = Side Entry
② No. of Circuits: 02 to 15, 18, 20, 26	⑥ Packing Options: R0 = Tape & Reel (Top entry type with pick & place pad) T0 = Tube
③ M = SMT Type	⑦ Process: -LF = For Lead Free soldering process -NH = For Lead Free soldering process and Halogen-Free
④ Plating Code: 1 = Matte Tin over Nickel	