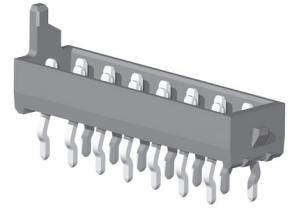
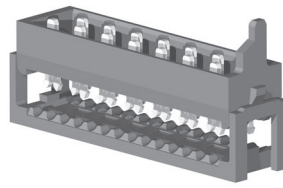


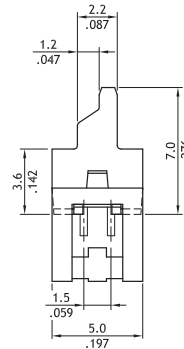
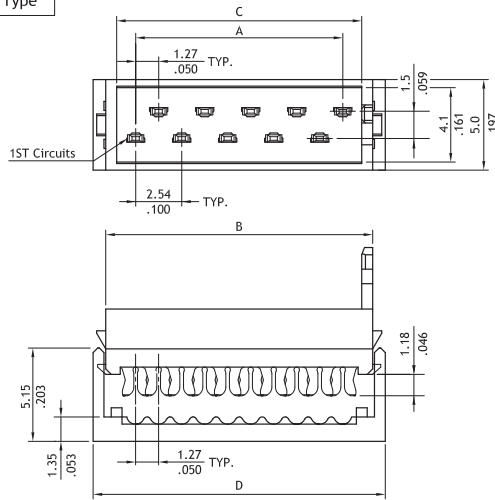
**CA30 Series 1.27mm(.050") Male IDC & DIP Type Connectors**

- ⊙ Can be used with CW03 1.27mm(.050") center spacing flat ribbon cable.
- ⊙ Mate with CA32 connector

RoHS Compliant 

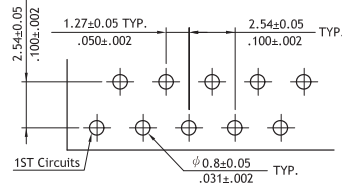
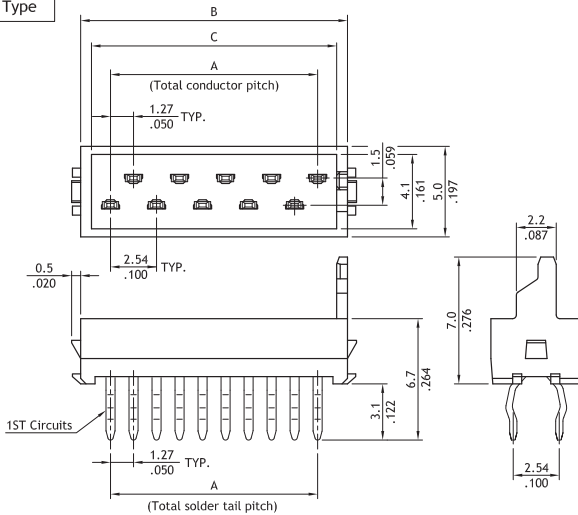


IDC Type



- A= 1.27 x No. of Spaces
- B= A + 3.3
- C= A + 2.1
- D= A + 4.7

DIP Type



Recommended PCB Layout

**Ordering Code**

① ② ③ ④ ⑤ ⑥ ⑦  
**CA30 26 P 1 3 0 0**

- ① Series No.
- ② No. of Circuits: 04 to 26
- ③ Contact Type: P = Plug
- ④ Plating Code:  
 1 = Matte Tin over Nickel  
 \*Optional plating available but MOQ requested
- ⑤ Color: 3 = Red
- ⑥ Type: 0 = DIP Type  
 I = IDC Type
- ⑦ Other Options:  
 0 = Standard  
 \*Special options consult manufacturer