

Ceramic Trimmer Capacitors



TZB4 Series

■ Features

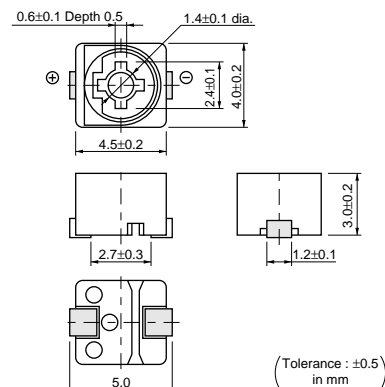
1. Miniature rectangular shape :
4.0(W)x4.5(L)x3.0(H)mm.
2. Color coded case facilitates identification of capacitance range.
3. Designed for automatic placement in surface mount applications.
4. Designed to withstand flux baths and solder baths.
(with cover film type)
5. Can be temporarily attached to PCB with adhesives.
(Terminal style A and B)
6. Can be reflow and flow(with cover film type) soldering method.
7. Stable characteristics over a wide frequency range.
(Resonant frequency : 1000 MHz min. / 6pF)

■ Applications

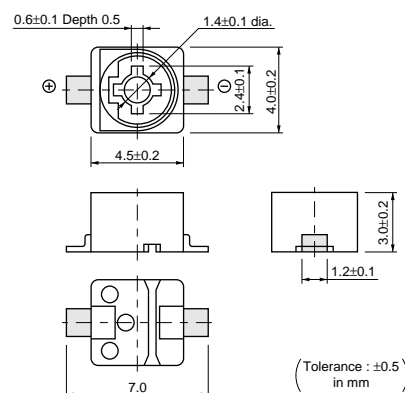
- Car audio systems
- Hybrid ICs
- Remote keyless entry systems
- Tuner packs
- DVD
- Cordless telephones
- Pagers
- Surveillance cameras
- Burglarproof devices



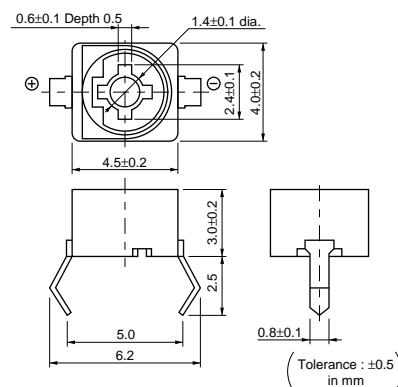
A Type



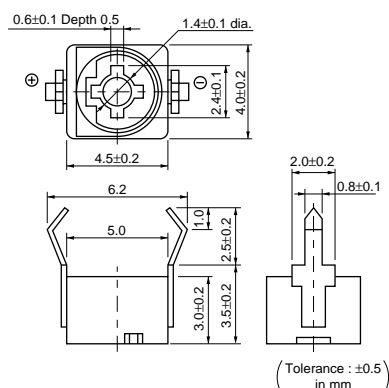
B Type



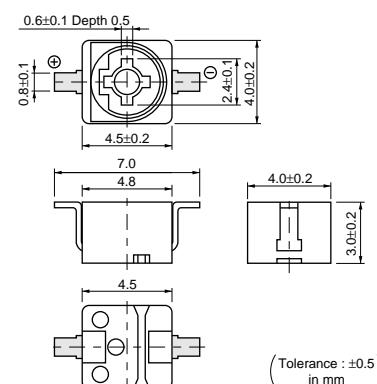
C Type



D Type



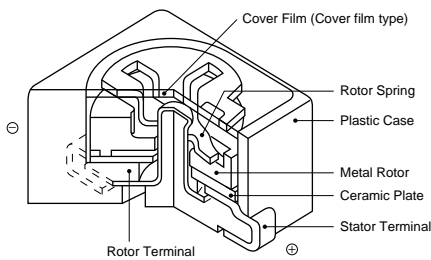
E Type



Part Number	Cmin. (pF)	Cmax. (pF)	TC	Q	Rated Voltage	Withstanding Voltage	Stator/Case Color
TZB4Z030□□10	1.4 max.	3.0 +50/-0%	NP0±200ppm/°C	300min. at 1MHz, Cmax	100Vdc	220Vdc	Brown
TZB4Z060□□10	2.0 max.	6.0 +50/-0%	NP0±200ppm/°C	500min. at 1MHz, Cmax.	100Vdc	220Vdc	Blue
TZB4Z100□□10	3.0 max.	10.0 +50/-0%	NP0±300ppm/°C	500min. at 1MHz, Cmax.	100Vdc	220Vdc	White
TZB4R200□□10	4.5 max.	20.0 +50/-0%	N750±300ppm/°C	500min. at 1MHz, Cmax	100Vdc	220Vdc	Red
TZB4P300□□10	6.5 max.	30.0 +50/-0%	N1200±500ppm/°C	300min. at 1MHz, Cmax	100Vdc	220Vdc	Green
TZB4P400□□10	8.5 max.	40.0 +50/-0%	N1200±500ppm/°C	300min. at 1MHz, Cmax	100Vdc	220Vdc	Yellow
TZB4Z250□□10	4.0 max.	25.0 +100/-0%	NP0±300ppm/°C	300min. at 1MHz, Cmax.	50Vdc	110Vdc	Black+Marking
TZB4R500□□10	7.0 max.	50.0 +100/-0%	N750±300ppm/°C	300min. at 1MHz, Cmax	50Vdc	110Vdc	Black+Marking

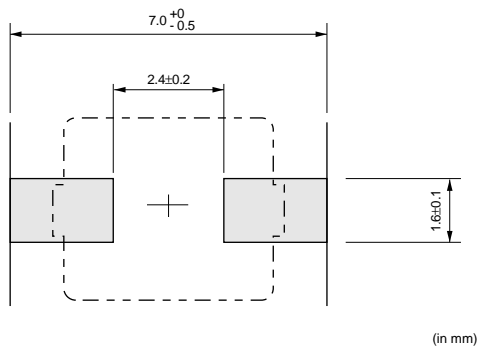
Insulation Resistance : 10000M ohm min. Torque : 1.5~10.0mNm Operating Temperature Range : -25~+85°C
Two blank columns are terminal type codes and filled with cover film codes (A: not provided, B: provided).

Construction

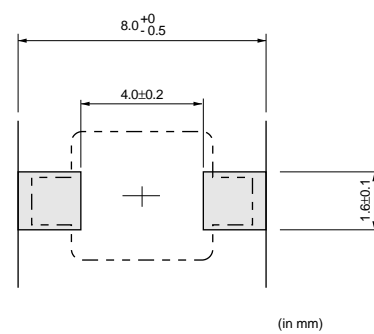


Land Pattern/Mounting Holes

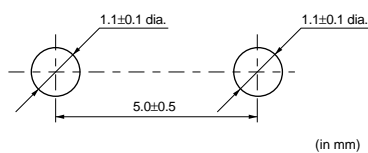
A Type



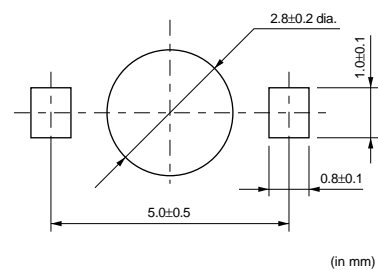
B Type



C Type



D Type

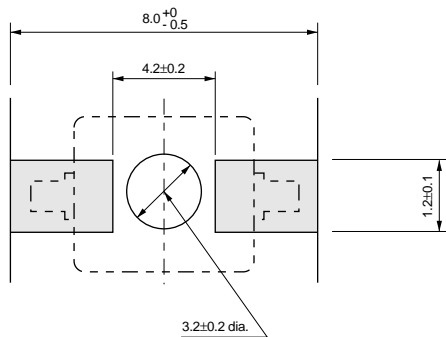


Continued on the following page. ↗

Continued from the preceding page.

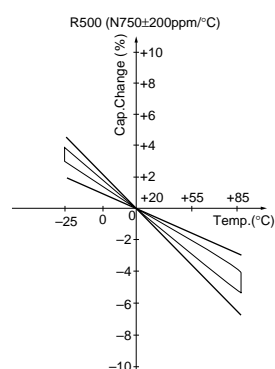
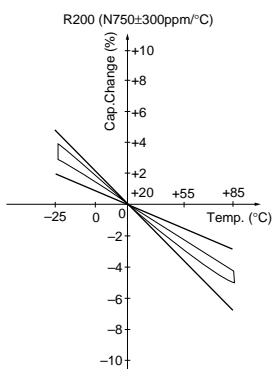
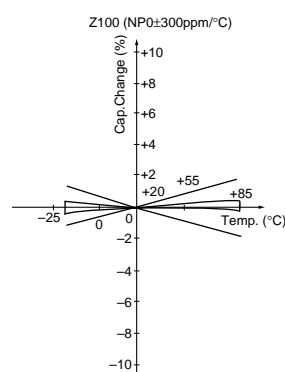
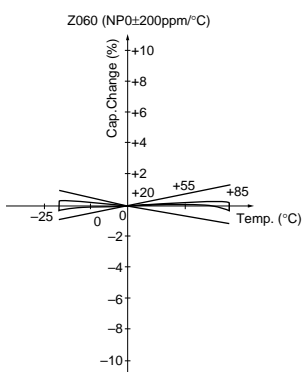
Land Pattern/Mounting Holes

E Type



(in mm)

Temperature Characteristics



Continued on the following page.