

Ceramic Trimmer Capacitors



TZC3 Series

■ Features

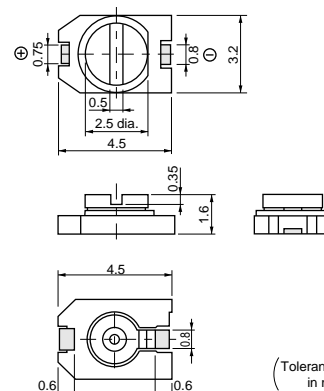
1. Small size with external dimension of 3.2(W)x4.5(L)x1.6(H)mm (Cross slot type : 1.7(H)mm)
2. Color coded stator permits easy identification of capacitance and reduces mounting errors.
3. Can be adjusted with conventional adjustment tools having a thickness of 0.5mm.
4. Available for cross slot type to provide better adjustability.
5. Providing mechanism to prevent air leak offers better mountability with automatic mounter. (Cross slot type)
6. Designed for automatic placement in surface mount applications.
7. Heat resistant resin withstands reflow soldering temperatures.

■ Applications

- Compact radios
- Headphone stereos
- Pagers
- Portable radio equipments
- Hybrid ICs
- Cellular telephones
- Cordless telephones
- Remote keyless entry systems



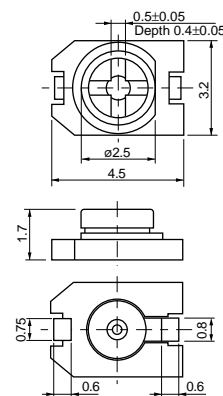
Standard Type



(Tolerance:±0.1 in mm)



Cross Slot Type



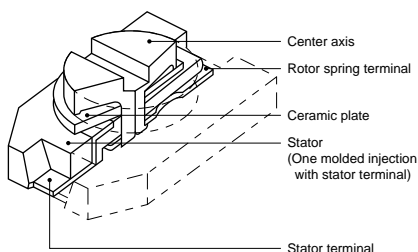
(Tolerance:±0.1 in mm)

| Part Number | Cmin. (pF) | Cmax. (pF) | TC | Q | Rated Voltage | Withstanding Voltage | Stator/Case Color |
|--------------|------------|--------------|-----------------|------------------------|---------------|----------------------|-------------------|
| TZC3Z030A□□□ | 1.4 max. | 3.0 +50/-0% | NP0±300ppm/°C | 300min. at 1MHz, Cmax. | 100Vdc | 220Vdc | Brown |
| TZC3Z060A□□□ | 2.0 max. | 6.0 +50/-0% | NP0±300ppm/°C | 500min. at 1MHz, Cmax. | 100Vdc | 220Vdc | Blue |
| TZC3R100A□□□ | 3.0 max. | 10.0 +50/-0% | N750±300ppm/°C | 500min. at 1MHz, Cmax. | 100Vdc | 220Vdc | White |
| TZC3P200A□□□ | 5.0 max. | 20.0 +50/-0% | N1200±500ppm/°C | 300min. at 1MHz, Cmax. | 100Vdc | 220Vdc | Red |
| TZC3P300A□□□ | 6.5 max. | 30.0 +50/-0% | N1200±500ppm/°C | 300min. at 1MHz, Cmax. | 100Vdc | 220Vdc | Green |

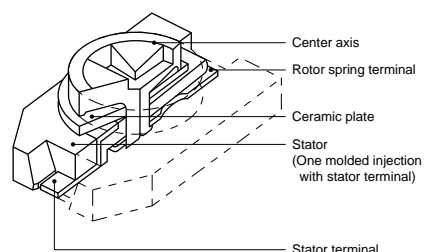
Insulation Resistance : 10000M ohm min. Torque : 1.5~10.0mNm Operating Temperature Range : -25~+85°C
The last three digits show the slot type. 110:standard(minus) type, 310:plus type.

■ Construction

Standard Type



Cross Slot Type

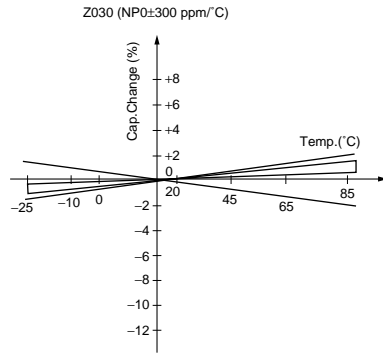


Continued on the following page. ↗

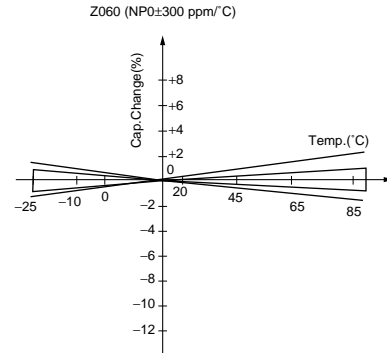
Continued from the preceding page.

Temperature Characteristics

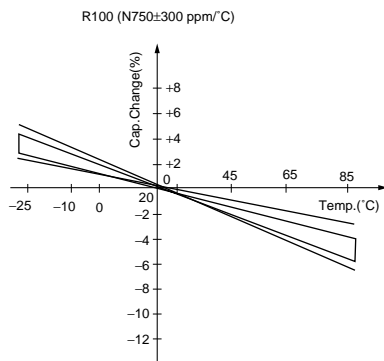
TZC3Z030



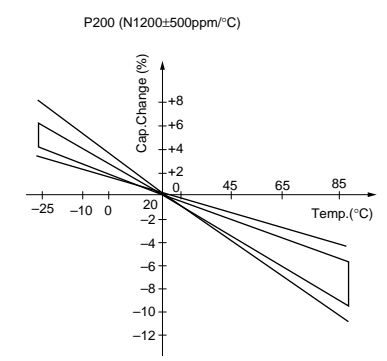
TZC3Z060



TZC3R100

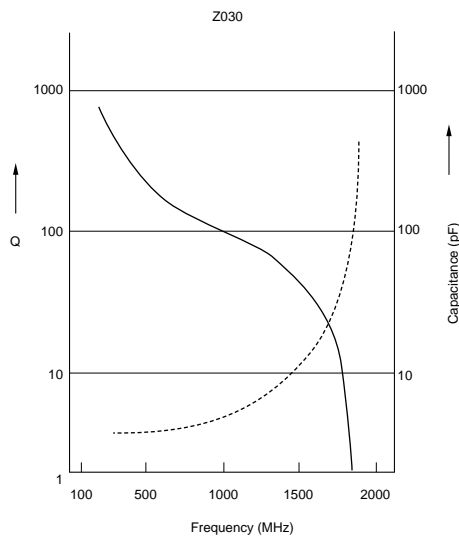


TZC3P200

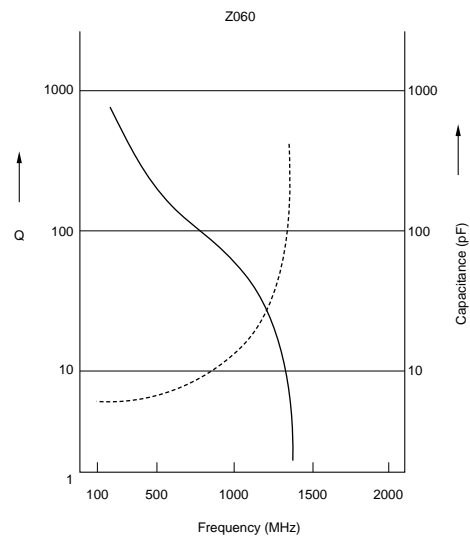


Frequency Characteristics

TZC3Z030



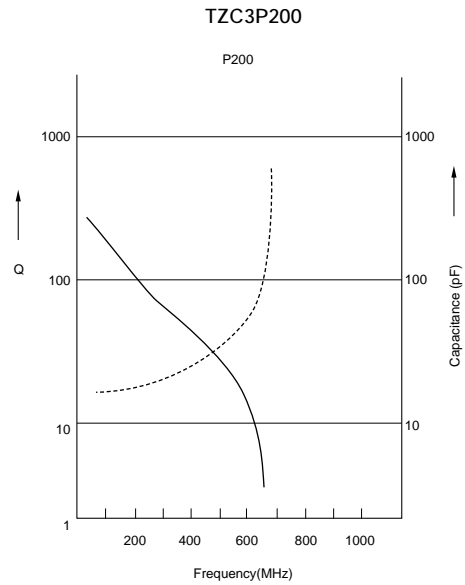
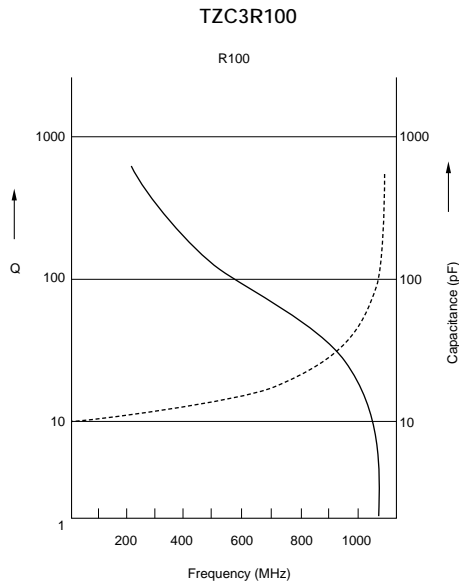
TZC3Z060



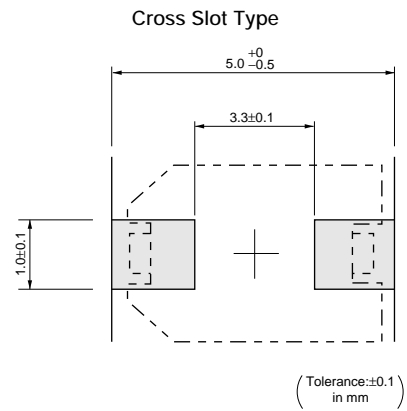
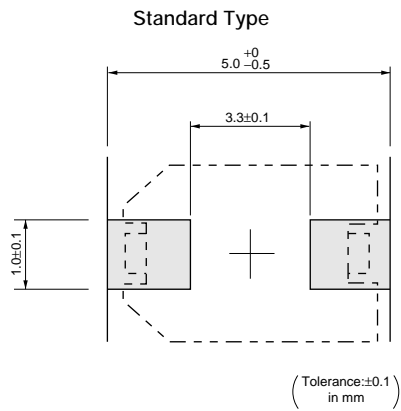
Continued on the following page. ↗

Continued from the preceding page.

Frequency Characteristics



Land Pattern



Temperature Profile

