



## Right Angle Tactile Switches Series SPJ



PAT. I341543  
PAT. ZL 2007 2 0306718.9

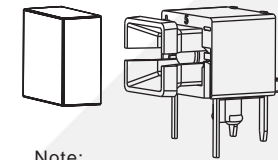
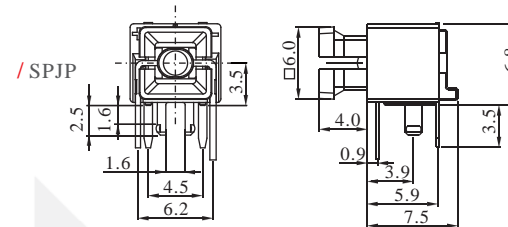
### General Specifications

Current Rating	:50mA
Voltage Rating	:12VDC
Dielectric Withstanding Voltage	:250VAC for 1 minute
Contact Resistance	:100m Ohm Max.(initial)
Insulation Resistance	:100M Ohm Min.
Operating Force	:200gf±50gf
Total Travel	:0.3mm±0.1mm
Mechanical Life	:1,000,000 cycles Min.
Function	:Momentary(SPST)
Operating Temperature	:-10 °C ~ +60 °C

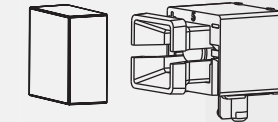
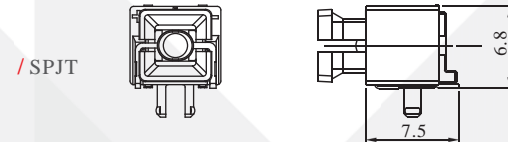
### Materials

Cap	:Polycarbonate (PC)
Base	:Polyamide (PA)
Reflector	:Polyamide (PA)
Switch Terminal	:Brass with gold plating
Action Dome	:Stainless steel with silver plating
Sealing rubber	:Silicone

### Dimension

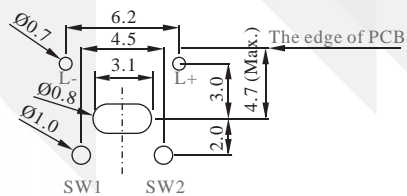


Note:  
\*Fit cap **AFTER** soldering process.

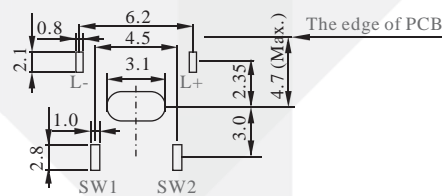


Note:  
\*Fit cap **AFTER** soldering process.

### PCB layout & Circuit Diagram

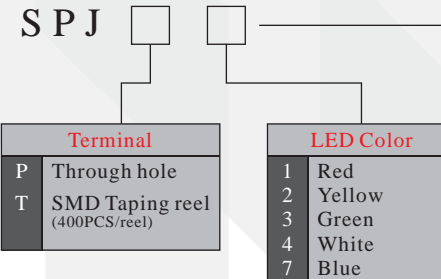


/ Through hole type - SPJP



/ SMD type - SPJT

### How to Order



EXAMPLE:  
SPJPI YCA044TD  
From Page 33



Page 33

Page 49

Page 39

Page 49

Page 46